

**NEW 100% NATURAL**

# Natural Cannabinergic Ingredient

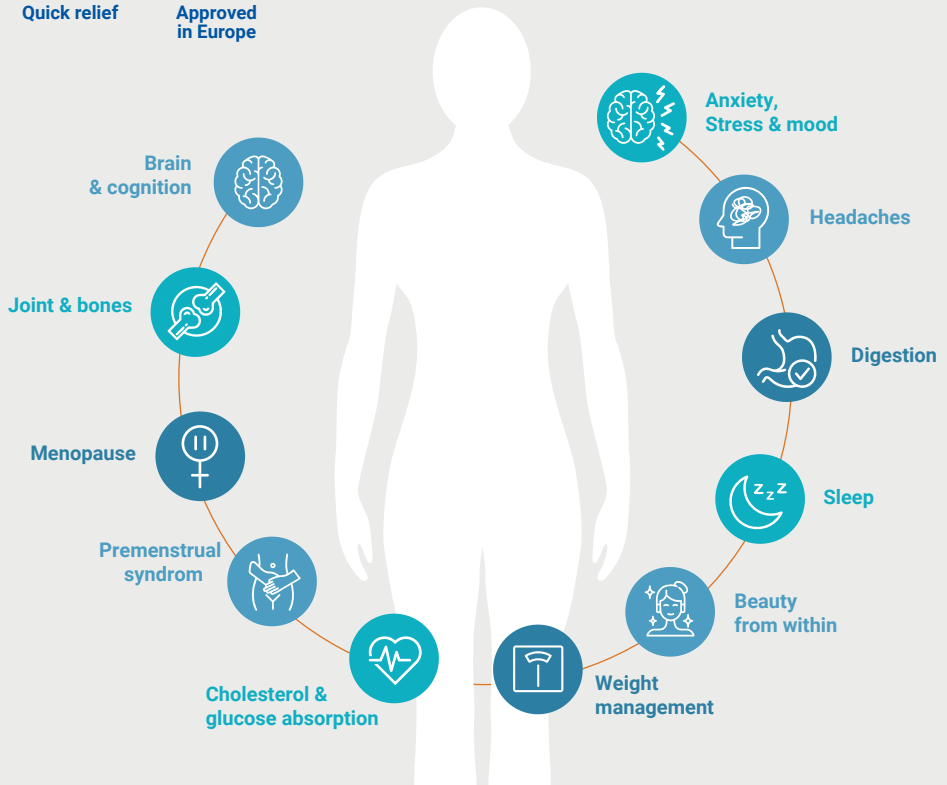
**CiBium** by **sesqium**



Quick relief



Approved  
in Europe



## CB1 receptors

### NERVOUS SYSTEM :

- Anxiety / mood
- Pain
- Sleep

## CB2 receptors

### IMMUNE SYSTEM :

- Inflammation
- Skin
- Joint

Their role is to maintain & fine-tune physiological processes, maintaining homeostasis, and directly supporting well-being.

# The endocannabinoid system is a global system found throughout our body :

**NOVASTELL**  
ESSENTIAL INGREDIENTS

The endocannabinoid system includes two main ligands, 2-AG and AEA, which bind to CB1 and CB2 receptors. They are degraded by the enzymes MAGL and FAAH, respectively.

## RESULTS *in-vivo test*



↘ -45% to -68%

**STRESS**



↗ +80%

**SLEEP**



↘ -27% to -32%

**PAIN**

*immediate relief*



↘ -59%

**INFLAMMATION**

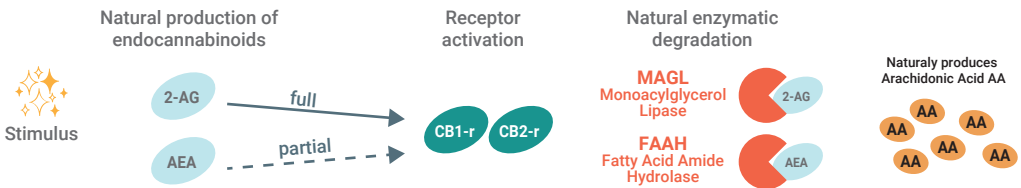
*after 20 minutes*



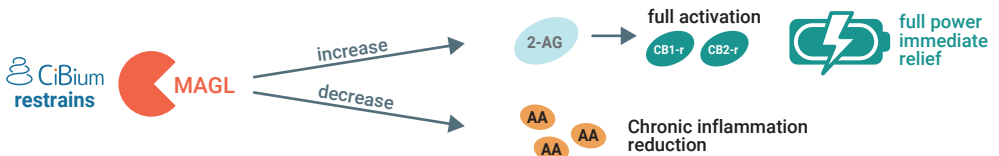
The innovative endocannabinergic ingredient

**Recommended Daily dose : > 100 mg (chronic) | > 200 mg (acute)**

## THE ENDOCANNABINOID SYSTEM



## CIBIUM - MECHANISM OF ACTION



✉ [contact@novastell.com](mailto:contact@novastell.com)

[novastell.com](http://novastell.com)